



Fosse Green Energy

EN010154

2.6 Statutory or Non-Statutory Sites or Features of Nature Conservation Plan

VOLUME

2

Planning Act 2008 (as amended)

Regulation 5(2)(I)

Infrastructure Planning (Applications: Prescribed
Forms and Procedure) Regulations 2009 (as
amended)

08 December 2025

Planning Act 2008

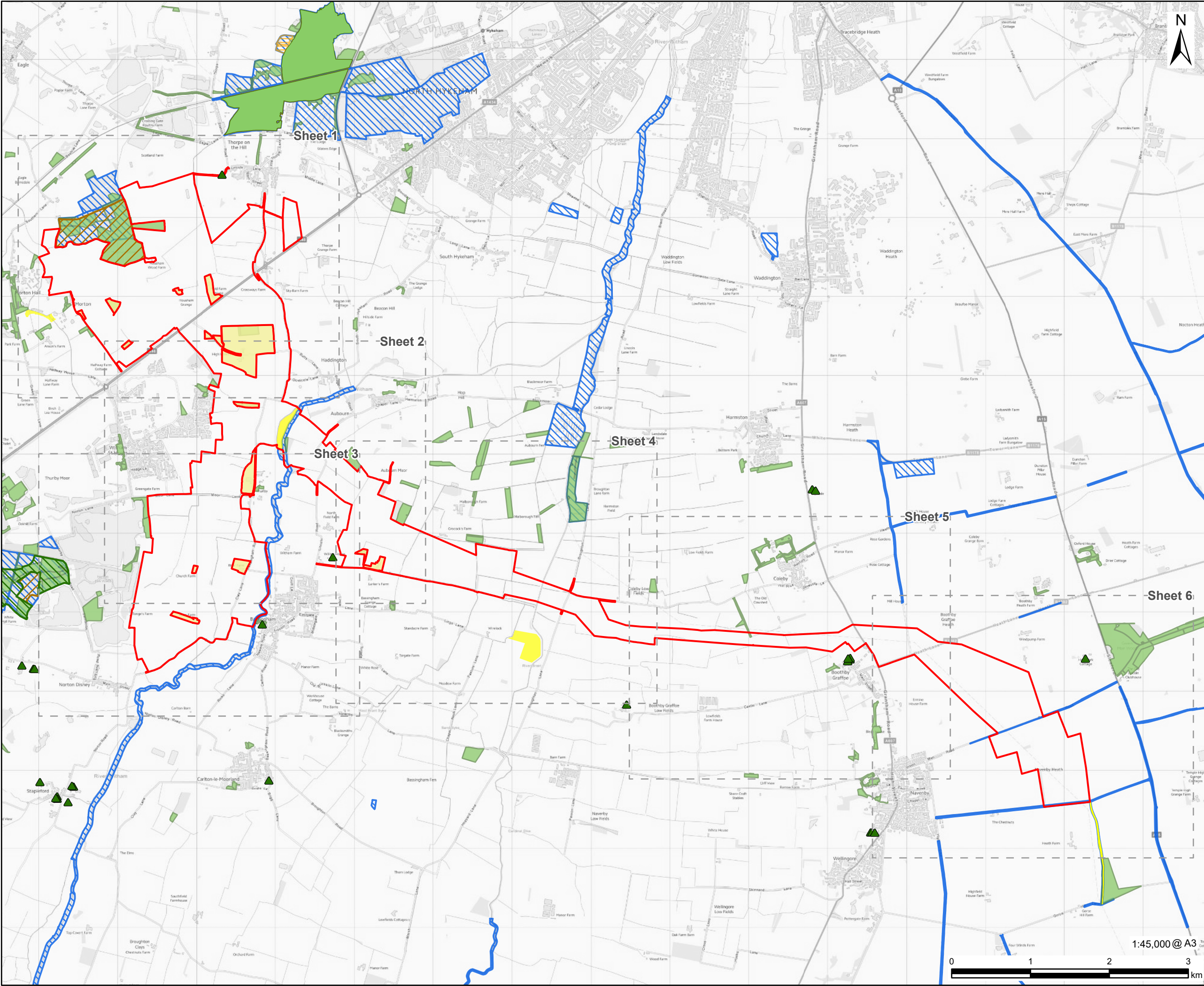
The Infrastructure Planning (Applications: Prescribed Forms and Procedure) Regulation 2009 (as amended)

Fosse Green Energy Development Consent Order 202[]

2.6 Statutory or Non-Statutory Sites or Features of Nature Conservation Plan

Regulation Reference	Regulation 5(2)(l)
Planning Inspectorate Scheme Reference	EN010154
Application Document Reference	EN010154/APP/2.6
Author	Fosse Green Energy Limited

Version	Date	Issue Purpose
Rev 1	18 July 2025	DCO Submission
Rev 2	02 September 2025	Procedural Decision
Rev 3	08 December 2025	Change Notification



PROJECT

Fosse Green Energy

CLIENT

Fosse Green Energy Ltd

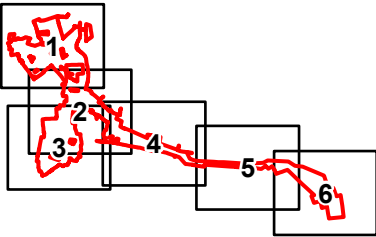
CONSULTANT

AECOM Limited
Sunley House
4 Bedford Park
Surrey, CR0 2AP, UK

LEGEND

- DCO Site Boundary
- Land Not Included in the DCO Site Boundary
- Traditional orchard
- Ancient & Semi-Natural Woodland
- Ancient Replanted Woodland
- Local Nature Reserve (LNR)
- Local Wildlife Site (LWS)
- Priority Habitats Inventory (within study area)**
 - Coastal and floodplain grazing marsh
 - Lowland calcareous grassland
 - Deciduous woodland
 - Lowland dry acid grassland
 - Lowland heathland
 - Reedbeds

SHEET LAYOUT



NOTES

Contains OS data © Crown copyright 2025

LEGISLATION

Regulation 5(2)(l) Infrastructure Planning
(Applications: Prescribed Forms and
Procedure) Regulations 2009.

ISSUE PURPOSE

Change Notification

FIGURE TITLE

Statutory and Non-statutory Sites or
Features of Nature Conservation, and
Important Habitats Plan - Key Plan

FIGURE NUMBER

Figure 2.6

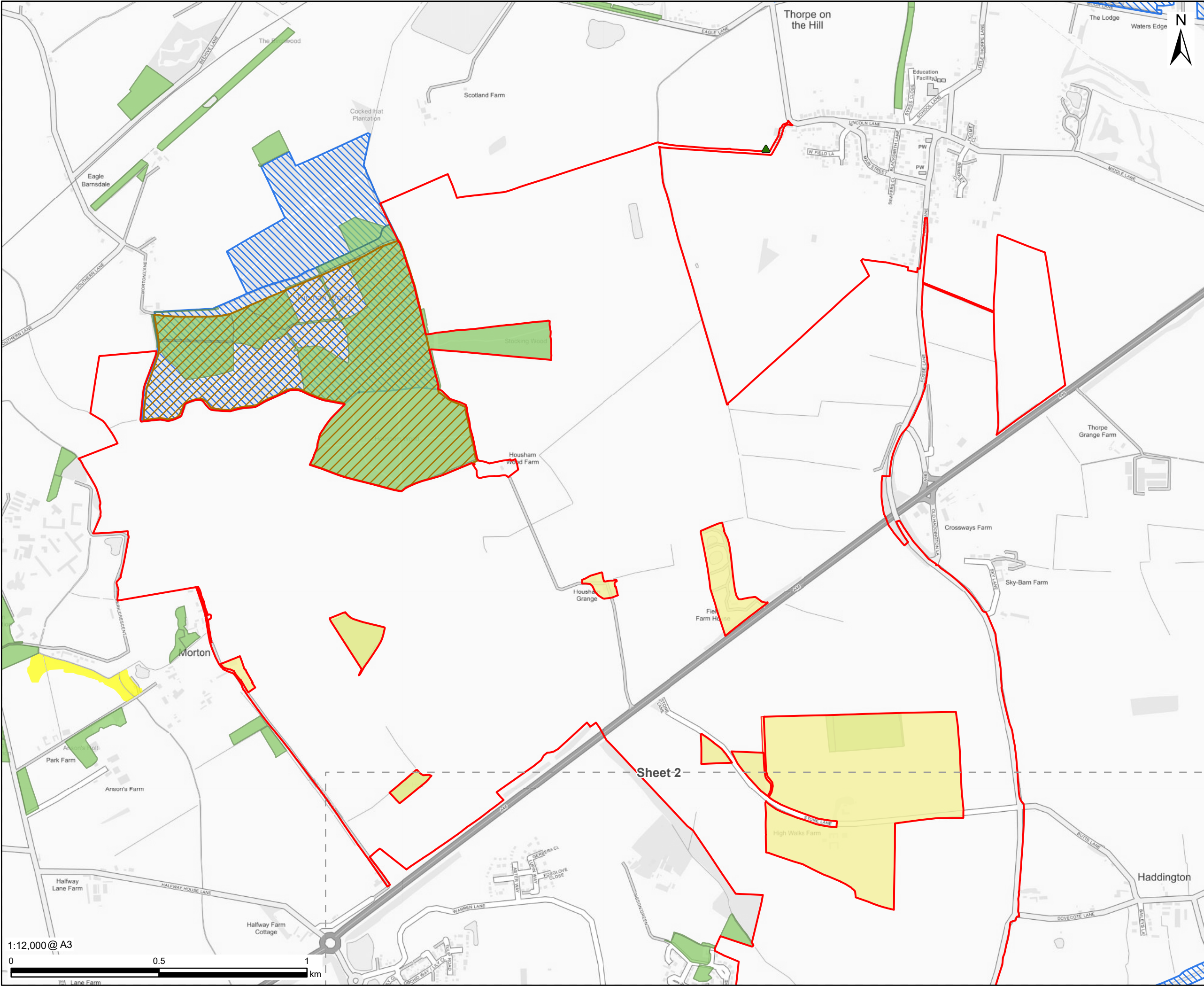
REV.

03

DOCUMENT REFERENCE

EN010154/APP/2.5

This drawing has been prepared for the use of AECOM's client. It may not be used, modified, reproduced or relied upon by third parties, except as agreed by AECOM or as required by law. AECOM accepts no responsibility, and denies any liability whatsoever, to any party that uses or relies on this drawing without AECOM's express written consent. Do not scale this document. All measurements must be obtained from the stated dimensions.



PROJECT

Fosse Green Energy

CLIENT

Fosse Green Energy Ltd

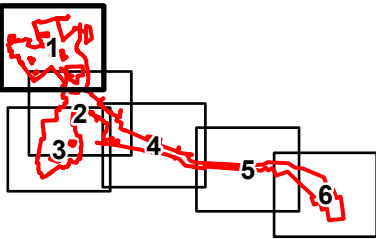
CONSULTANT

AECOM Limited
[Redacted]
Surrey, CR0 2AP, UK
www.aecom.com

LEGEND

- DCO Site Boundary
- Land Not Included in the DCO Site Boundary
- Traditional orchard
- Local Wildlife Site (LWS)
- Priority Habitats Inventory (within study area)**
 - Coastal and floodplain grazing marsh
 - Deciduous woodland
 - Ancient Replanted Woodland

SHEET LAYOUT



NOTES

Contains OS data © Crown copyright 2025

LEGISLATION

Regulation 5(2)(l) Infrastructure Planning (Applications: Prescribed Forms and Procedure) Regulations 2009.

ISSUE PURPOSE

Change Notification

FIGURE TITLE

Statutory and Non-statutory Sites or Features of Nature Conservation, and Important Habitats Plan - Sheet 1 of 6

FIGURE NUMBER

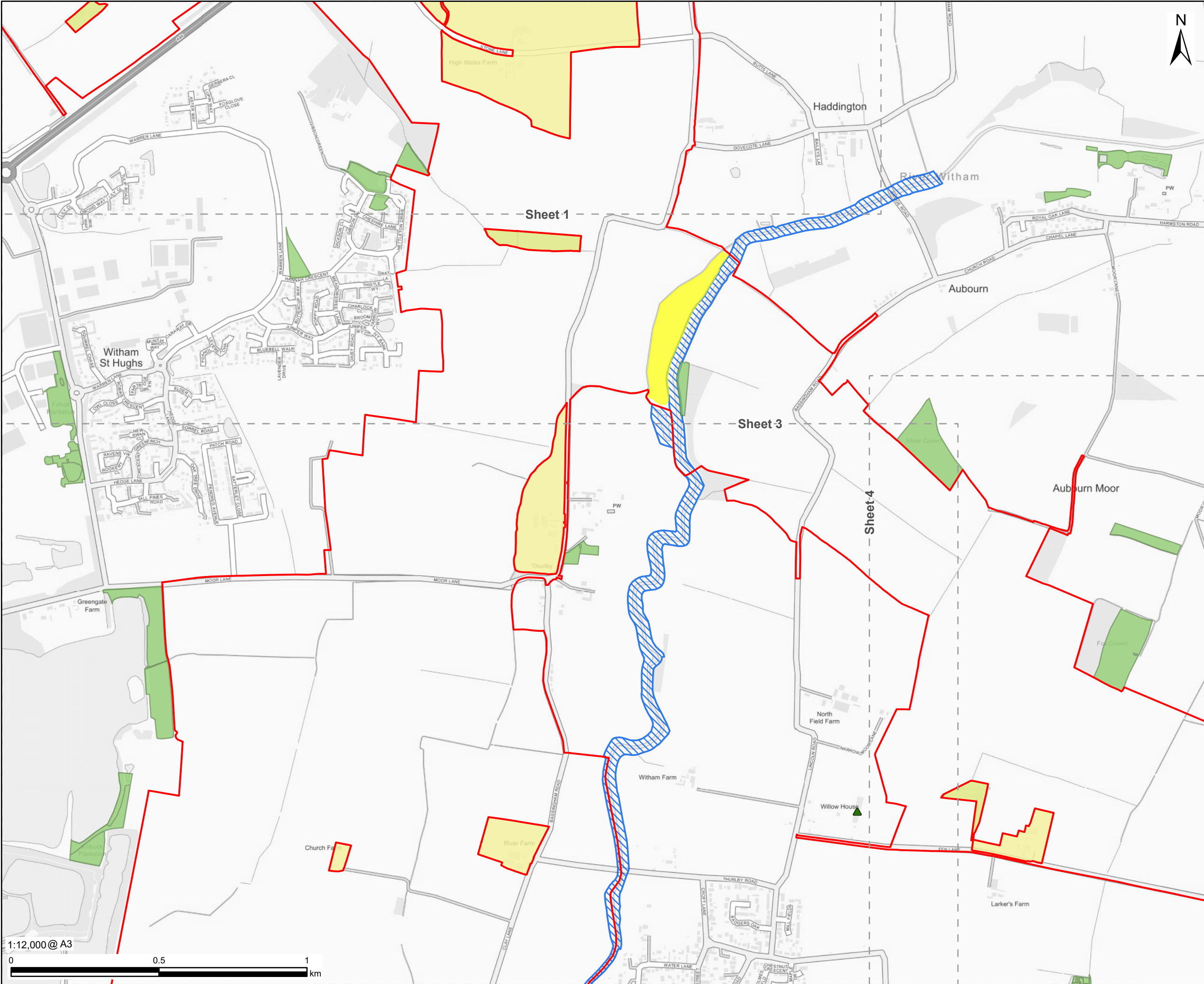
Figure 2.6

REV.

03

DOCUMENT REFERENCE

EN010154/APP/2.6



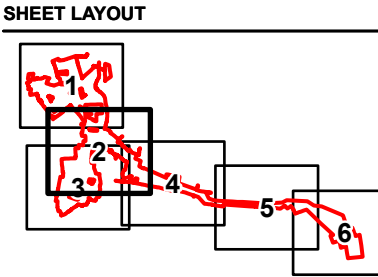
PROJECT
Fosse Green Energy

CLIENT
Fosse Green Energy Ltd

CONSULTANT
AECOM Limited
[Redacted]
Surrey, CR0 2AP, UK
www.aecom.com

LEGEND

- DCO Site Boundary
- Land Not Included in the DCO Site Boundary
- Traditional orchard
- Local Wildlife Site (LWS)
- Priority Habitats Inventory (within study area)**
- Coastal and floodplain grazing marsh
- Deciduous woodland



NOTES
Contains OS data © Crown copyright 2025

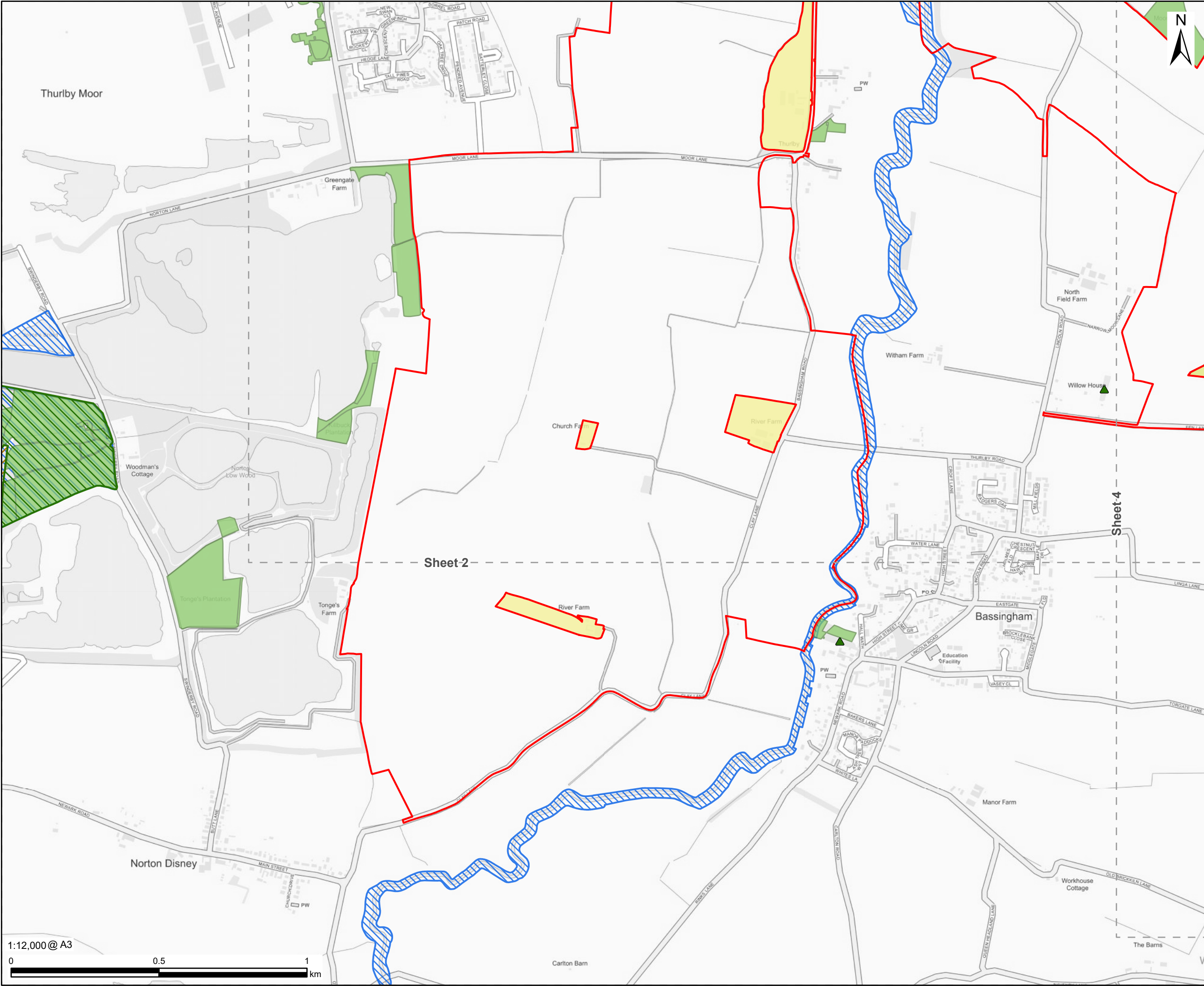
LEGISLATION
Regulation 5(2)(l) Infrastructure Planning (Applications: Prescribed Forms and Procedure) Regulations 2009.

ISSUE PURPOSE
Change Notification

FIGURE TITLE
Statutory and Non-statutory Sites or Features of Nature Conservation, and Important Habitats Plan - Sheet 2 of 6

FIGURE NUMBER **REV.**
Figure 2.6 03

DOCUMENT REFERENCE
EN010154/APP/2.6

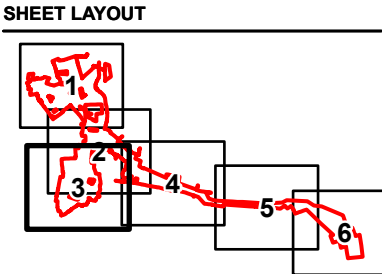


PROJECT
Fosse Green Energy

CLIENT
Fosse Green Energy Ltd

CONSULTANT
AECOM Limited
Surrey, CR0 2AP, UK
www.aecom.com

- LEGEND**
- DCO Site Boundary
 - Land Not Included in the DCO Site Boundary
 - Traditional orchard
 - Local Wildlife Site (LWS)
 - Priority Habitats Inventory (within study area)**
 - Deciduous woodland
 - Ancient & Semi-Natural Woodland
 - Ancient Replanted Woodland



NOTES
Contains OS data © Crown copyright 2025

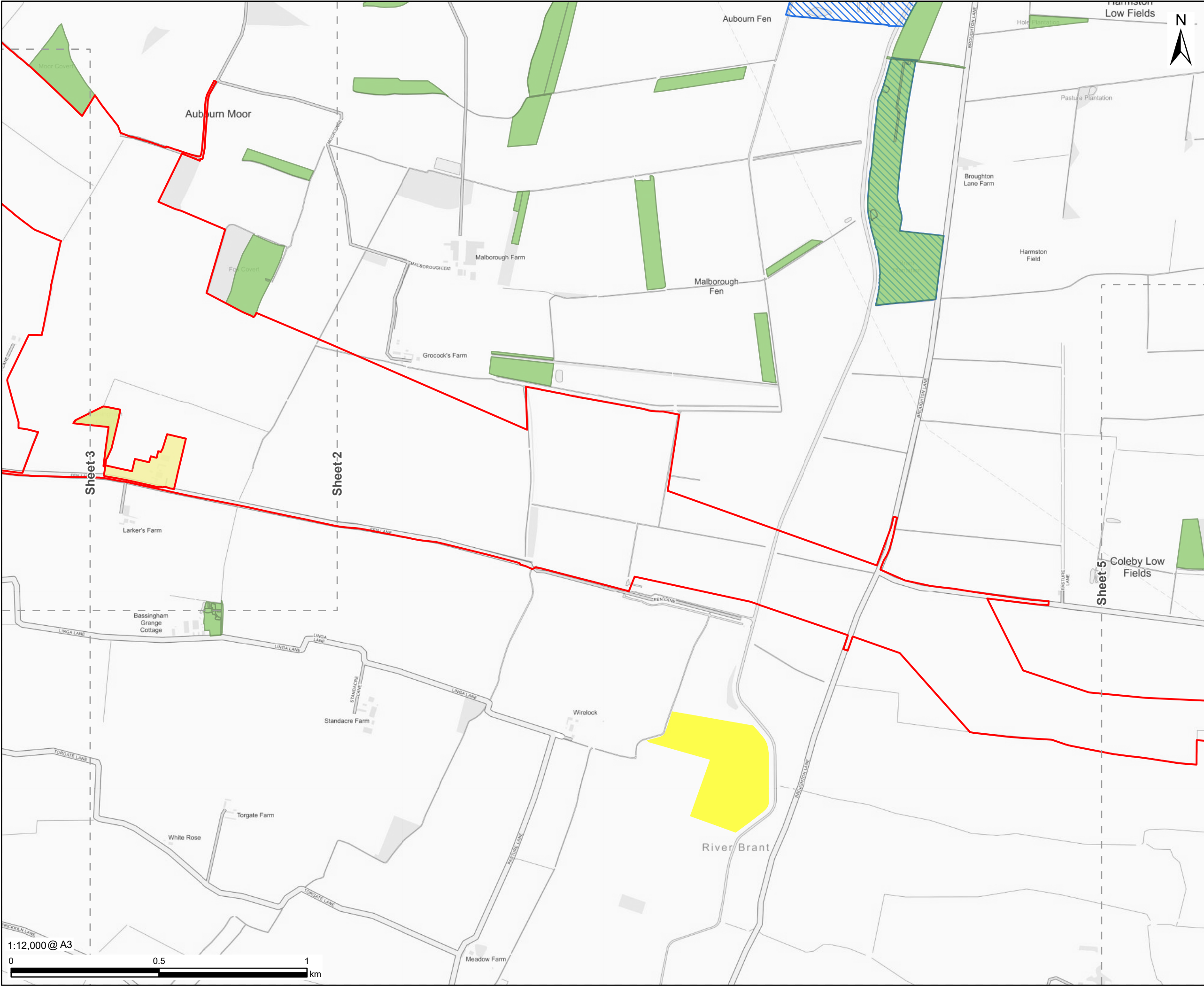
LEGISLATION
Regulation 5(2)(l) Infrastructure Planning (Applications: Prescribed Forms and Procedure) Regulations 2009.

ISSUE PURPOSE
Change Notification

FIGURE TITLE
Statutory and Non-statutory Sites or Features of Nature Conservation, and Important Habitats Plan - Sheet 3 of 6

FIGURE NUMBER **REV.**
Figure 2.6 03

DOCUMENT REFERENCE
EN010154/APP/2.6



PROJECT

Fosse Green Energy

CLIENT

Fosse Green Energy Ltd

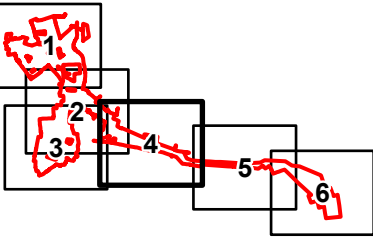
CONSULTANT

AECOM Limited
[Redacted]
Surrey, CR0 2AP, UK
www.aecom.com

LEGEND

- DCO Site Boundary
- Land Not Included in the DCO Site Boundary
- Local Wildlife Site (LWS)
- Priority Habitats Inventory (within study area)**
 - Coastal and floodplain grazing marsh
 - Deciduous woodland

SHEET LAYOUT



NOTES

Contains OS data © Crown copyright 2025

LEGISLATION

Regulation 5(2)(l) Infrastructure Planning
(Applications: Prescribed Forms and
Procedure) Regulations 2009.

ISSUE PURPOSE

Change Notification

FIGURE TITLE

Statutory and Non-statutory Sites or
Features of Nature Conservation, and
Important Habitats Plan - Sheet 4 of 6

FIGURE NUMBER

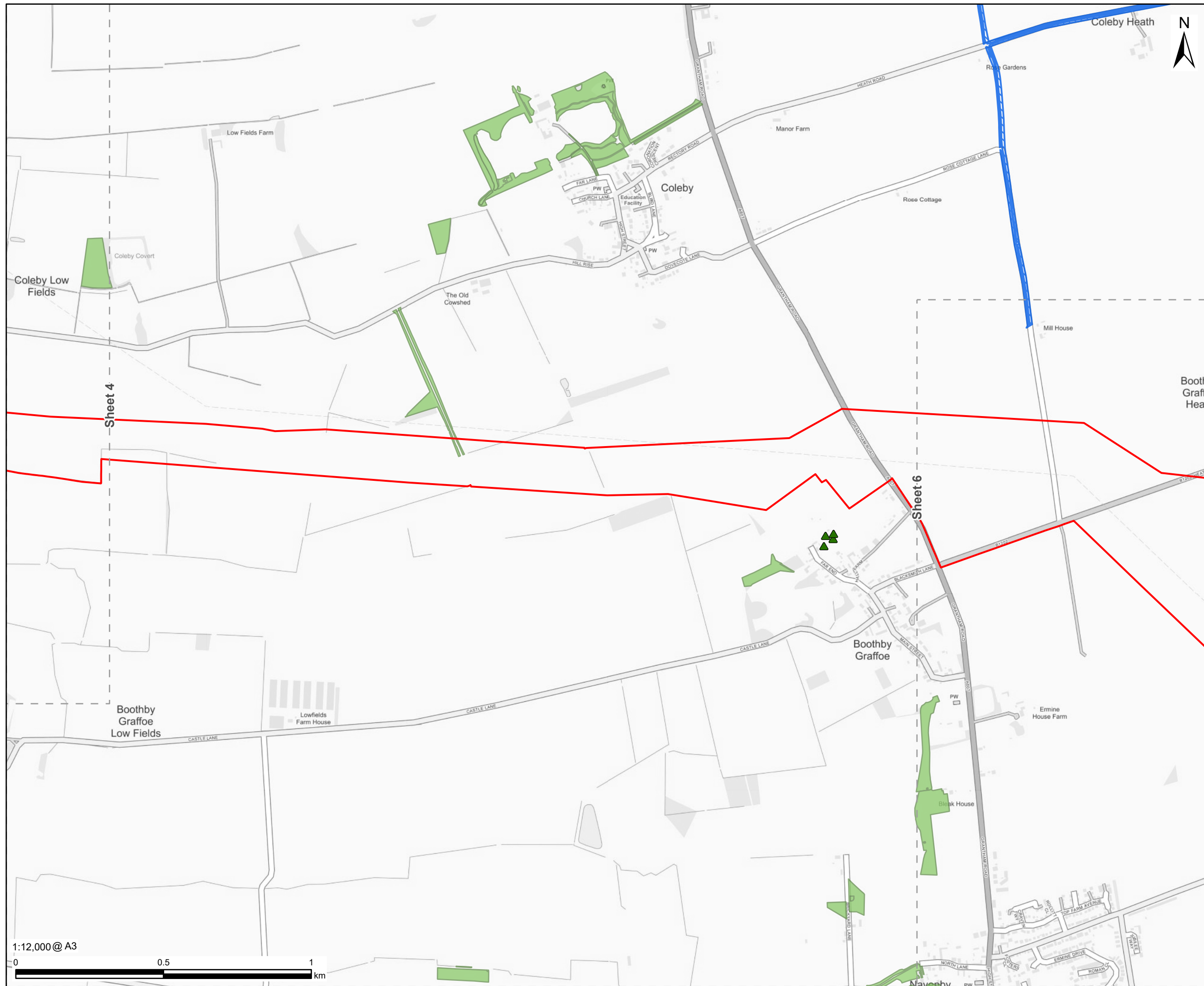
Figure 2.6

REV.

03

DOCUMENT REFERENCE

EN010154/APP/2.6



PROJECT

Fosse Green Energy

CLIENT



Fosse Green Energy Ltd

CONSULTANT

AECOM Limited

Surrey, CR0 2AP, UK
www.aecom.com

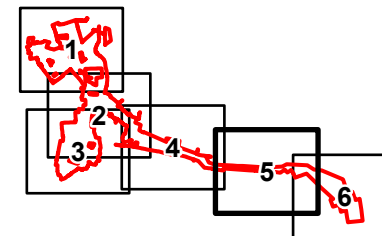
LEGEND

- DCO Site Boundary
 Traditional orchard
 Local Wildlife Site (LWS)

Priority Habitats Inventory (within study area)

- Deciduous woodland

SHEET LAYOUT



NOTES

Contains OS data © Crown copyright 2025

LEGISLATION

Regulation 5(2)(l) Infrastructure Planning
(Applications: Prescribed Forms and
Procedure) Regulations 2009.

ISSUE PURPOSE

Change Notification

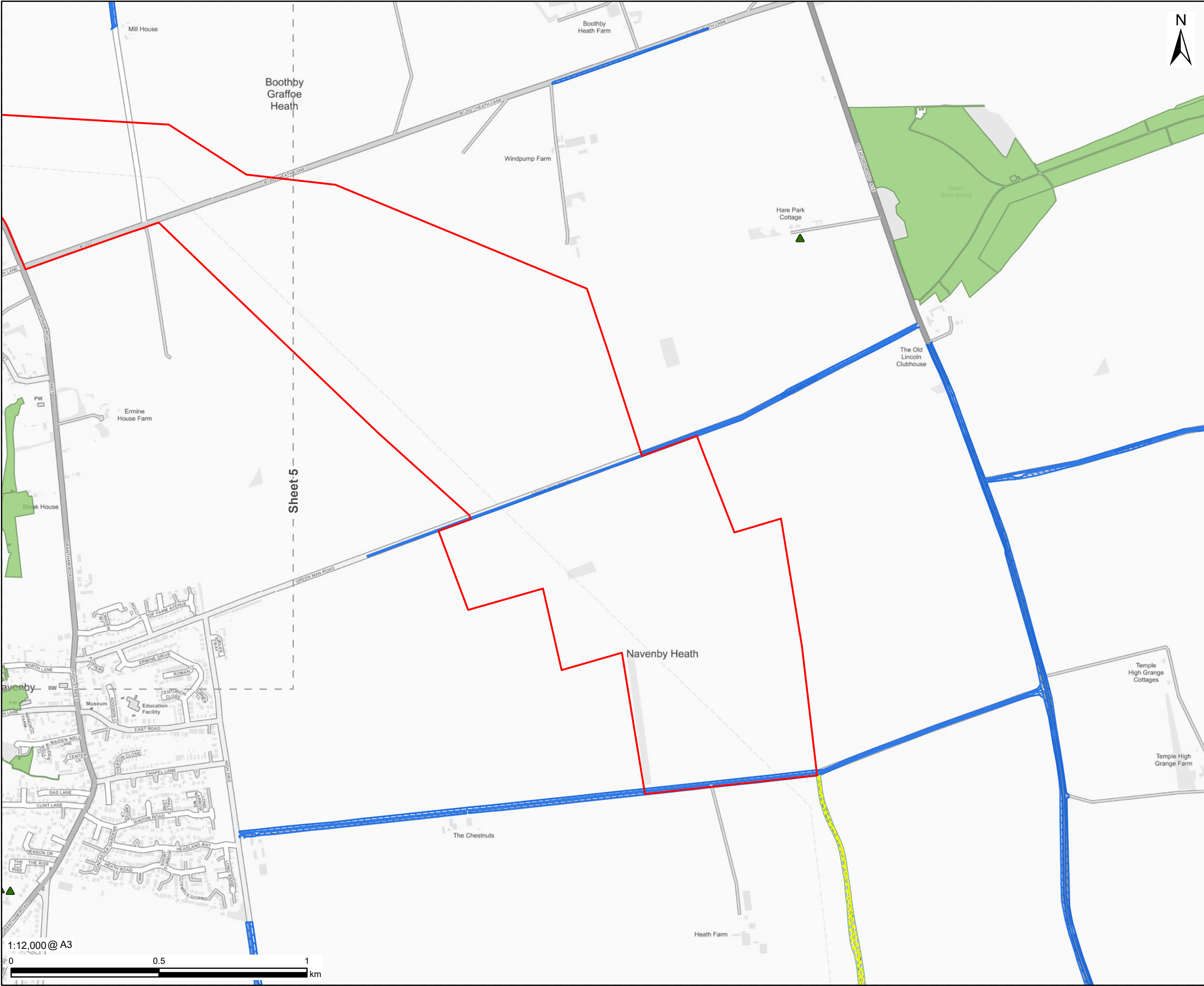
FIGURE TITLE

Statutory and Non-statutory Sites or
Features of Nature Conservation, and
Important Habitats Plan - Sheet 5 of 6

FIGURE NUMBER	REV.
Figure 2.6	03

DOCUMENT REFERENCE

EN010154/APP/2.6

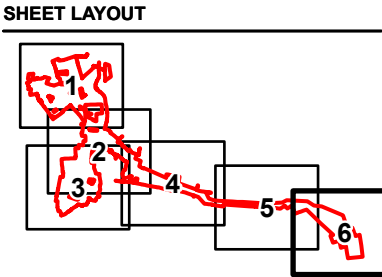


PROJECT
Fosse Green Energy

CLIENT
Fosse Green Energy Ltd

CONSULTANT
AECOM Limited
[Redacted]
Surrey, CR0 2AP, UK
www.aecom.com

LEGEND
— DCO Site Boundary
▲ Traditional orchard
▨ Local Wildlife Site (LWS)
Priority Habitats Inventory (within study area)
▨ Lowland calcareous grassland
■ Deciduous woodland



NOTES
Contains OS data © Crown copyright 2025

LEGISLATION
Regulation 5(2)(l) Infrastructure Planning
(Applications: Prescribed Forms and
Procedure) Regulations 2009.

ISSUE PURPOSE
Change Notification

FIGURE TITLE
Statutory and Non-statutory Sites or
Features of Nature Conservation, and
Important Habitats Plan - Sheet 6 of 6

FIGURE NUMBER **REV.**
Figure 2.6 03

DOCUMENT REFERENCE
EN010154/APP/2.6

This drawing has been prepared for the use of AECOM's client. It may not be used, modified, reproduced or relied upon by third parties, except as agreed by AECOM or as required by law. AECOM accepts no responsibility, and denies any liability whatsoever, to any party that uses or relies on this drawing without AECOM's express written consent. Do not scale this document. All measurements must be obtained from the stated dimensions.